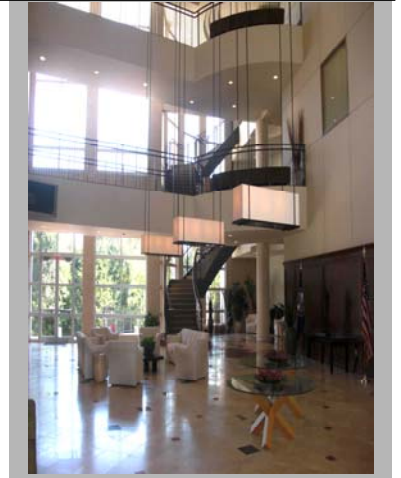


OFFICE SPACE FOR LEASE
2600 John Saxon Boulevard
Norman, Oklahoma
Shown by appointment only



For Lease

Building Size: 65,692 sf +/-
Space Available: 2,500 to 11,000 sf
Base Rent: \$18/sf full service

Property Type: 3 story office bldg. Class "A" facility

Parking: 220 spaces (includes 7 handicapped)

Elevators: Two (2)

Amenities: Above standard finishes throughout
Common conference rooms
Full kitchen
Large break rooms on each floor
100 % sprinkled
Security Cameras
Nicely landscaped campus setting
Server room available
Back-up generator for the entire building with automatic transfer switch

Location: Close proximity to Highway 9 just south of Postal Training Center and adjacent to the Norman Business Park. Approximately 5 minutes to OU.

To View inside and outside deals of the property please go to:
<http://host.newspin360.net/EquityRealty/2600JohnSaxonBoulevard/>

For Further Details Contact:

Judy J. Hatfield, CCIM
405.364.5300 office
405.640-6167 cell
jjhatfield@equityrealty.net

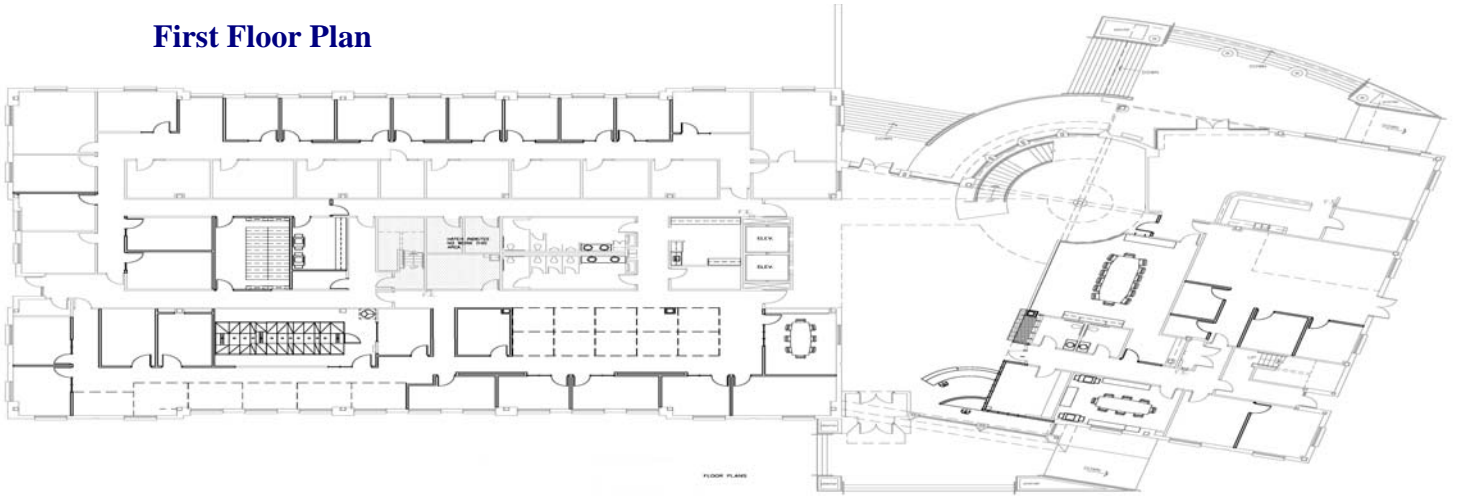
OFFICE SPACE FOR LEASE

One Corporate
2600 John Saxon Boulevard
Norman, Oklahoma
Limited space available

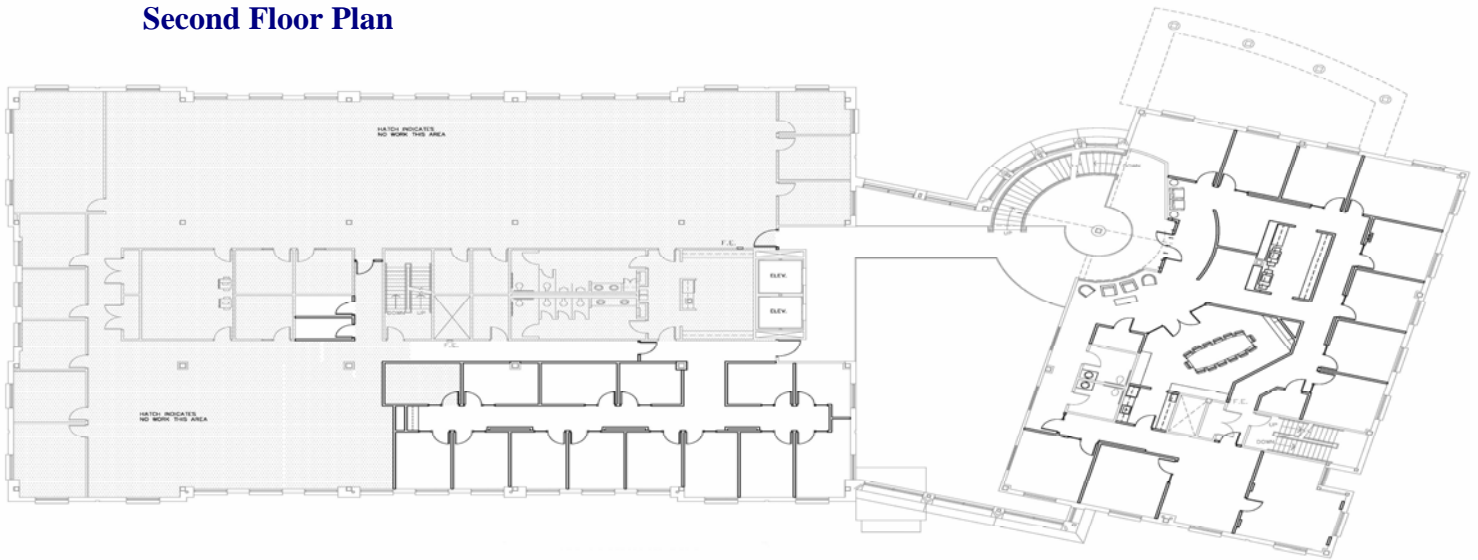
For Further Details Contact:

Judy J. Hatfield, CCIM
405.364.5300 office
405.640-6167 cell
jjhatfield@equityrealty.net

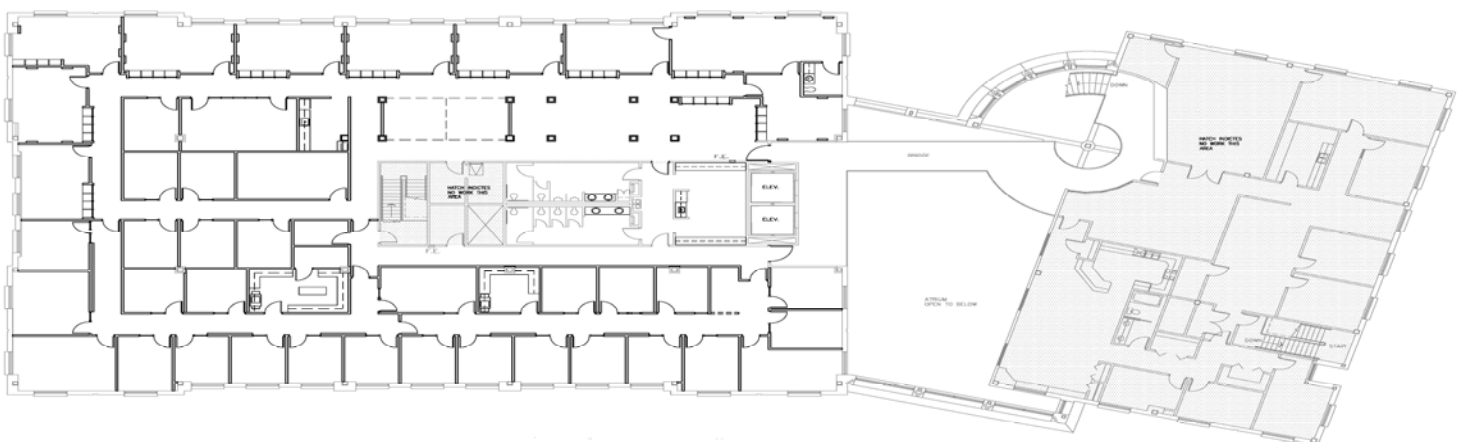
First Floor Plan



Second Floor Plan



Third Floor Plan



P.O. Box 1763 | Norman, OK 73070-1763 | 405.364.5300 ph | 405.360.7677 fax | www.equityrealty.net

The information contained herein has been obtained from the Owner and other reliable sources and is offered as an aid for investment analysis. Although deemed reliable information is not guaranteed, and is provided subject to errors, omissions, prior sale or withdrawal. Equity Commercial Realty, LLC. All rights reserved.

7/29/09 1372b

OFFICE SPACE FOR LEASE
2600 John Saxon Boulevard
Norman, Oklahoma
Shown by appointment only

Server Room



- The room is 16' x 21' 6"
 - 10 19" 46U open racks all with Uninterruptible power supply (UPS) supplied rack mounted Power distribution units (PDUs) the distribution cable is all CAT6
 - Eaton 9390 UPS
 - 2 Data Aire (DTUA-0412) floor mounted air conditioners
- This high tech amenity is part of an 11,000 square foot available on the second floor.

For Lease

**For Further Details
Contact:**

Judy J. Hatfield, CCIM
405.364.5300 office
405.640-6167 cell
jjhatfield@equityrealty.net